

# mitsubishi

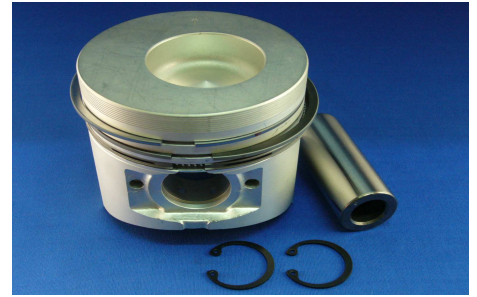
## K4N

Application:

Number of Cylinders 4

Cylinder dia. 90.0 MM

Swept volume 2290 ccm



KoyuTech Piston kit-Sets		Piston Rings		Cylinder liner
Piston: PMI253300 PMI253350 Piston-kit: HMI0114090000 HMI0114090050 OEM NO.		OEM NO. MM438-689		KoyuTech NO.90*140 OEM NO.
		OEM Ring Groove	SIZE	Liner&Sleeve
		Top: 2.5K 2nd: 2.0 Oil : 4.0	STD 0.50	In Diameter: Out Diameter: Total length: Flange:
Piston	SIZE	K.T Ring Groove	SIZE	Engine Valve
Comp:46.5 Height:-16.5 Length:86.0 Top shape:ø46.0 Direct injection Pin: 27 Length: 68	STD 0.50	Top: 2nd: Oil :		KoyuTech NO. V6002200 OEM NO. OK65A-12-111A IN 34.0 8 112.8
<b>Liner kit</b>		<b>Engine Bearing</b>		KoyuTech NO. V6102200 OEM NO. OK65A-12-121B EX 29.0 8 112.4
KoyuTech NO.		MAIN: MM438-664 CON.ROD: MM438-671 T/W:		<b>Valve seat</b>
REMARK:		C/B:  BUSH:		KoyuTech NO. IN EX
		<b>Cylinder Head</b>		<b>Valve guide / Sub Parts</b>
		Gasket: Overhauling Gasket:		Guide:VGMI-21 Seal: Water pump: