

mitsubishi

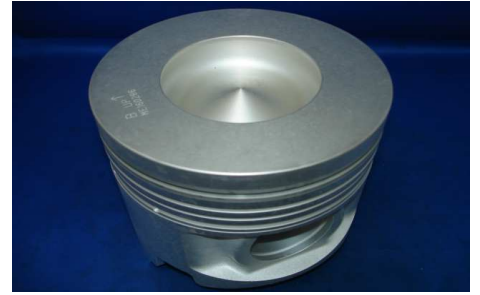
8M20

Application: TRUCK BUS

Number of Cylinders 8

Cylinder dia. 146.0 MM

Swept volume 20089 ccm



| KoyuTech Piston kit-Sets | | Piston Rings | | Cylinder liner |
|---|-----------------|---|------|--|
| Piston: | | OEM NO. ME996163 NPR:SDM31-138ZZ | | KoyuTech NO. OEM NO. |
| Piston-kit: | | OEM Ring Groove | SIZE | Liner&Sleeve |
| OEM NO. ME160286 | | Top: 3.3DK 2nd: 3.0 3rd: 3.0 Oil : 4.0 | STD | In Diameter: 146.0 Out Diameter: 169.0 Total length: 257.0 Flange: 177.5*12.0+1.2 |
| Piston | SIZE | K.T Ring Groove | SIZE | Engine Valve |
| Comp:82.7 Height:-25.1 Length:148.0 Top shape: □76.8 Direct injection Pin: 50 Length: 112 | w/al-fin STD | Top: 2nd: Oil : | | KoyuTech NO. OEM NO. ME160062 IN 50.0 10 185.2 |
| Liner kit | | Engine Bearing | | KoyuTech NO. |
| KoyuTech NO. | | MAIN: ME997681 CON.ROD: ME093763 T/W: ME160013 C/B: | | OEM NO. ME160062 EX 46.0 10 185.4 |
| REMARK: | | BUSH: | | Valve seat |
| | | Cylinder Head | | KoyuTech NO. IN EX |
| | | Gasket: Overhauling Gasket: | | Valve guide / Sub Parts |
| | | | | Guide: Seal: Water pump: |