

# ISUZU

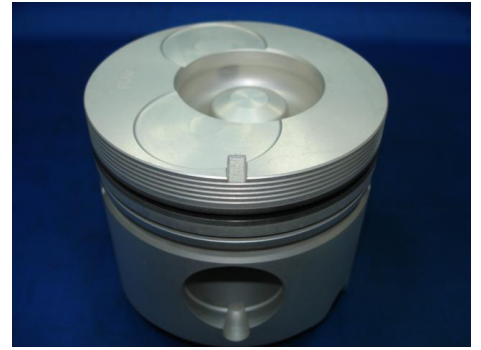
## 4JA1

Application: PICK-UP SUV HILANDER/CROSSWIND

Number of Cylinders 4

Cylinder dia. 93.0 MM

Swept volume 2499 ccm



| KoyuTech Piston kit-Sets   |                 | Piston Rings  |      | Cylinder liner  |
|--|-----------------|---|------|---|
| Piston:  |                 | OEM NO. 8-94247-867-0<br>NPR:SJI10-110ZZ  |      | KoyuTech NO.<br>OEM NO.8-94110-144-0  |
| Piston-kit:  |                 | OEM Ring Groove   | SIZE | Liner&Sleeve  |
| OEM NO. 8-97176-601-0  |                 | Top: 2.0<br>2nd: 2.0<br>Oil : 4.0   | STD  | In Diameter: 93.0<br>Out Diameter: 95.0<br>Total length: 156.0<br>Flange: 101.0*0.9   |
| Piston   | SIZE            | K.T Ring Groove   | SIZE | Engine Valve  |
| Comp:47.8<br>Height:-17.4<br>Length:87.8<br>Top shape:∅45<br>Direct injection<br>Pin: 31<br>Length: 76 | w/al-fin<br>STD | Top:<br>2nd:<br>Oil :   |      | KoyuTech NO.<br>V4001800<br>OEM NO.<br>8-94122-275-1<br>IN 40.1 8 118.1   |
| Liner kit  |                 | Engine Bearing  |      | KoyuTech NO.<br>V4101800<br>OEM NO.<br>8-94247-875-1<br>EX 35.7 8 118.1   |
| KoyuTech NO.   |                 | MAIN:<br>8-94168-553<br>CON.ROD:<br>8-94324-159<br>T/W:<br>8-94168-555<br>C/B:<br>8-94427-196<br>BUSH:<br>8-94247-968 |      | Valve seat  |
| REMARK:  |                 | Cylinder Head   |      | KoyuTech NO.<br>IN<br>EX  |
|  |                 | Gasket:8-94109-553-2<br>Overhauling Gasket:<br>5-87810-294-1  |      | Valve guide / Sub Parts   |
|  |                 |   |      | Guide:5-11721-016-0<br>Seal:5-12569-006-0<br>Water pump:GWIS-25A<br>Timing belt:8-94133-971-0<br>Tensioner:8-94382-214-0 lower<br>8-94382-215-0 upper |